



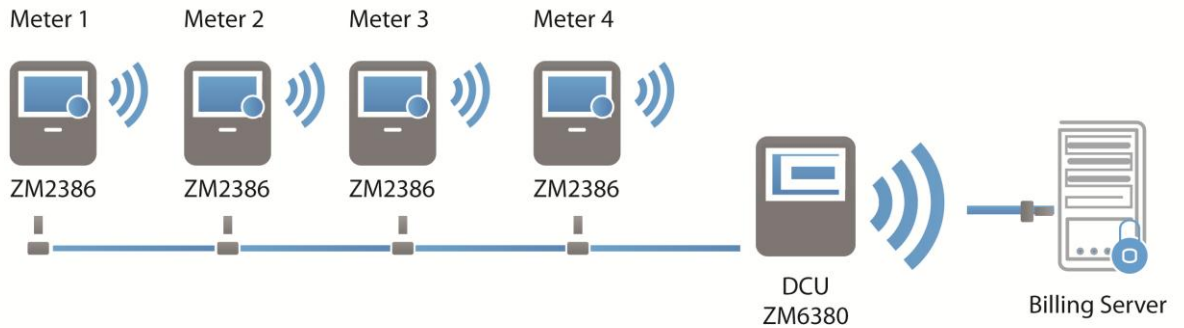
# ZM2385 RS232 to RS485 Converter

RS232 TO RS485 CONVERTER

## A COST SAVING CONVERTER TO FACILITATE THE LINK-UP OF A GREAT NUMBER OF RS232 METERS TO THE AMI

The industrial grade ZM2385 Converter enables an RS232 meter to link up to multiple meters to form a wired bus. A couple of these wired buses together will be able to connect a great number of meters to the ZM6380G

Data Concentrator Unit (DCU), thereby saving you significant costs in meter data communication.



Though originally built for Elster A1120 and Elster A1140 electric energy meters, the ZM2385 is easily modifiable to fit into any meter that comes with an RS232 interface.



## Key Features

- Fully compatible with Elster A1120, Elster A1140 and any meter with an RS232 interface
- For 2-way data communication between 2-wire RS485 and 3-wire RS232
- Signal and power isolated between RS232 and RS485
- 6VDC supply from Elster A1120 and Elster A1140 meters
- LED indicators for RS485 data transmission and reception
- Fully transparent to meter protocol



## Technical Data

### RS232 Data Interface

Circuits	: 3-wire bus (Transmit, Receive & Ground)
Data Rate	: Max. 120kbps
Standards	: EIA-232 / EIA-562

### RS485 Data Interface

Circuits	: 2-wire bus (Transmit & Receive)
Data Rate	: 500kbps
Nodes	: Connect up to 256 nodes
Standards	: ANSI/TIA/EIA-485-A-98

### Isolation

ESD	: 5KV
-----	-------

### Electrical

Voltage	: 6VDC $\pm$ 5% from Elster A1120 and Elster A1140 meters
---------	---

### Environmental

Temperature	: -40°C – +85°C
-------------	-----------------

### Compliance

RoHS and CE compliant

