



ZM2300G4 LTE-4G/3G Modem

LTE-4G / UMTS-3G MODEM

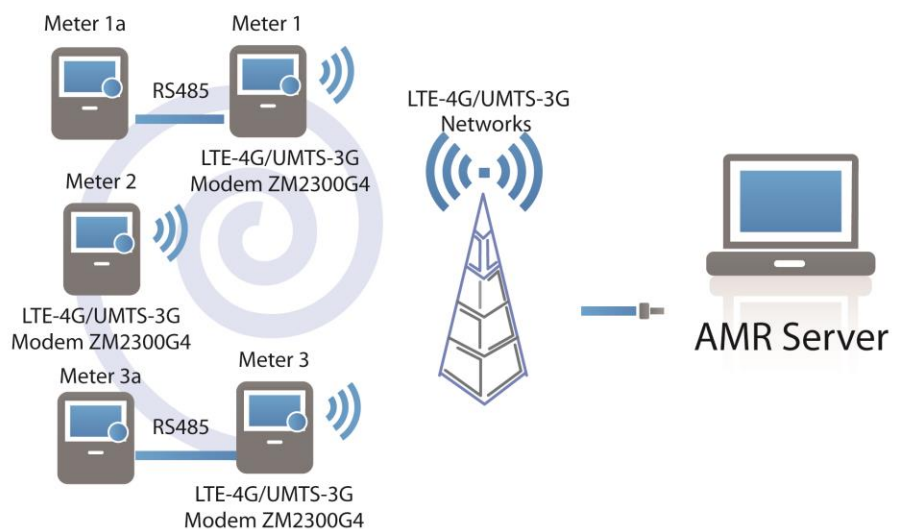
A MODEM FOR UNINTERRUPTED 2-WAY COMMUNICATION BETWEEN THE CENTRAL STATION & A CLUSTER OF METERS ONSITE

ZM2300G4 is designed to go into an Elster AS230, AS3000 and AS3500 programmable energy meter.

It is an industrial grade LTE-4G/UMTS-3G mobile data communication modem. This modem facilitates the polling and transfer of data from a cluster of meters on one hand and the execution of commands from the central

site on the other — the processes of which are fully transparent to the meter protocol. The two-way communication is carried out via the LTE-4G data network or UMTS-3G data network.

RS485 interface is provided to connect other meters via



RS485 bus. It allows central server to collect readings of a number of meters connected by RS485 with one master meter equipped with LTE modem.

A built-in temperature sensor inside the modem pre-empts potential issues resulting from extreme weather conditions; and the digital input detects abnormality in electric currents and voltage to ensure stable power supply.



Key Features

- Compatible with Elster AS230, AS3000 and AS3500 electric meters
- LTE-4G/UMTS-3G mobile data
- LED indicators for Mobile operation
- Fully transparent to meter protocol
- RS485 interface in RJ45 connector for other meters connection
- Ambient temperature reporting

Technical Data

Mobile Data Communication

Frequency Bands

LTE FDD	: B1/B3/B5/B7/B28
UMTS-3G WCDMA	: B1/B5

Transmit Power

Output Power	: Class 3 23dBm for LTE FDD Class 3 23dBm for LTE TDD Class 3 24dBm for UMTS
--------------	--

Receive Sensitivity

LTE B1	: -101.5dBm (10M)
LTE B3	: -101.5dBm (10M)
LTE B5	: -101.0dBm (10M)
LTE B7	: -99.5 dBm (10M)
LTE B28	: -102 dBm (10M)
WCDMA B1	: -110dBm
WCDMA B5	: -110.5dBm

Date Rate

LTE	: LTE-FDD Max 10Mbps (DL) Max 5Mbps (UL) LTE-TDD Max 8.96Mbps (DL) Max 3.1Mbps (UL)
DC-HSPA+	: Max 42Mbps (DL) Max 5.76Mbps (UL)
UMTS	: Max 384kbps (DL) Max 384kbps (UL)

Protocol

TCP/UDP/PPP/FTP/HTTP/NTP/PING/QMI

USIM

1.8V/3V

Data Interface to Meter

Standard	: UART
Data Rate	: 2400bps–460800bps

RS485 interface

Connector	: RJ45
Data Rate	: Max. 500kbps

Electrical

Power Supply	: AC85-264V, 50/60Hz
Circuit Volt.	: 3.3V

Environmental(Temperature)

Operating	: -25°C – +70°C
Storage	: -40°C – +85°C

Compliance

RoHS and CE compliant

LTE-4G/3G module:

CE/GCF/Vodafone (Europe)

RCM/Telstra (Australia)